

Power Model

$$y = \frac{K}{x}$$

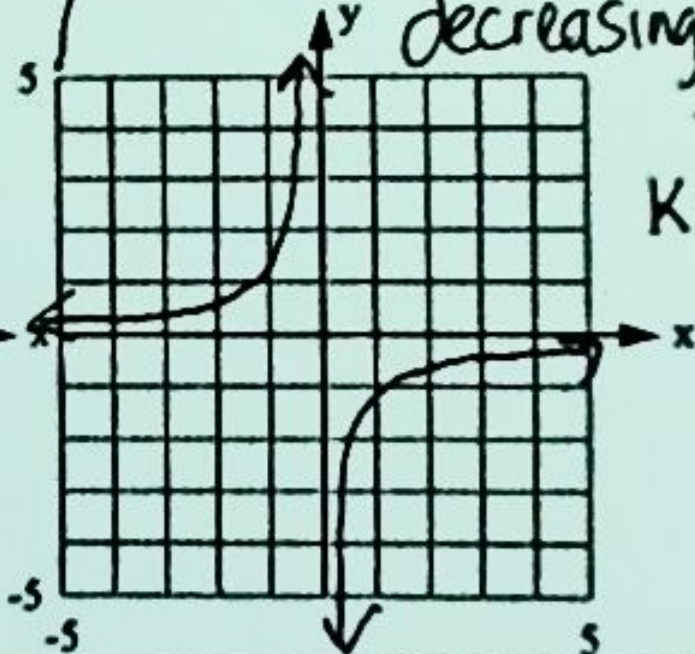
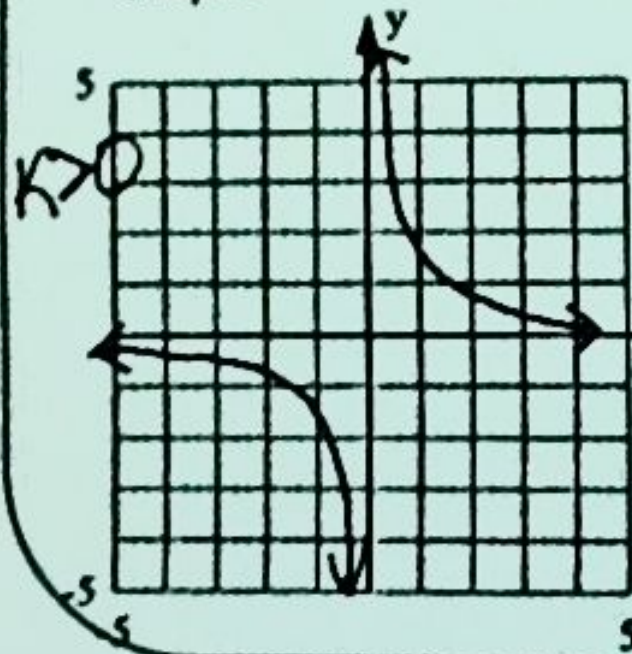
Inverse Variation function

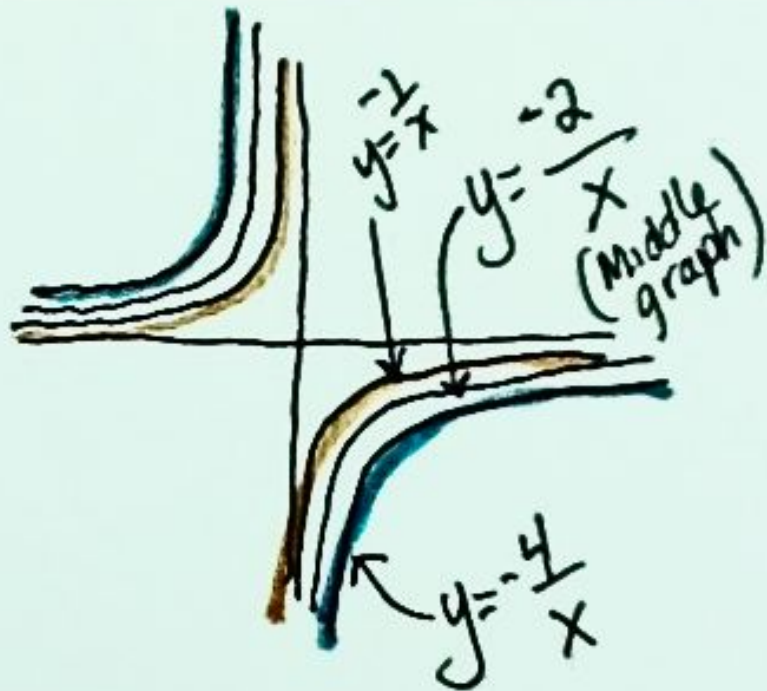
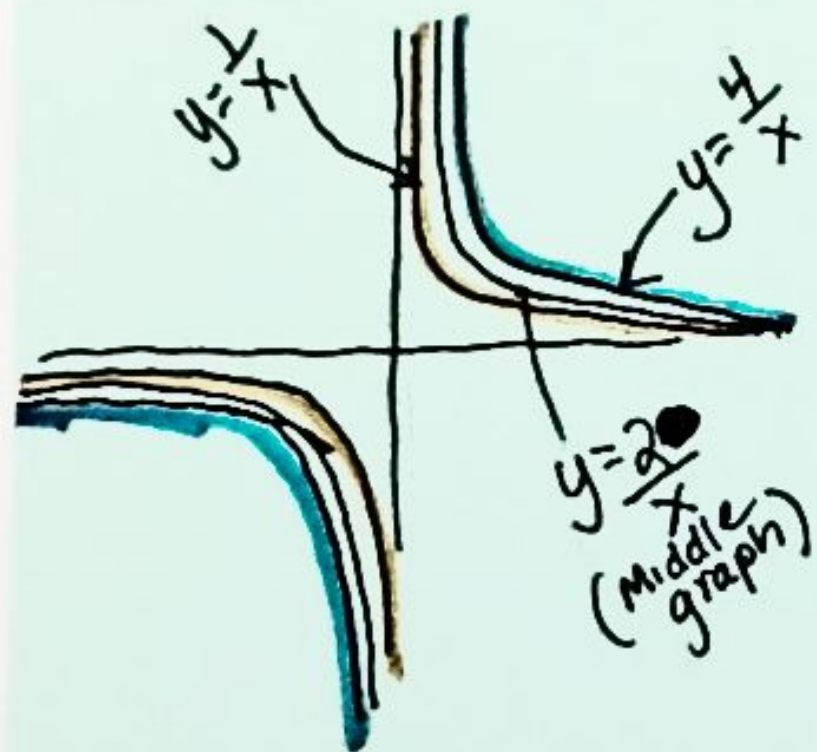
Words for phrases describing the patterns in the graphs below:

$K > 0$: As x increases
Constantly, y decreases
increasingly. then decreases
decreasingly.

Graphs

$K < 0$: As x increases
Constantly, y increases
increasingly then ~~decreases~~
increases
decreasingly





- ① The further away the K -value is from zero the further away the curve from the origin.
- ② The greater the $|K|$ the further away the curve is from the origin.